



**GADS HILL
CENTER**

Transforming Families Through Education

2016 Annual Report



118 YEARS OF SERVING CHICAGO'S FAMILIES

TABLE OF CONTENTS

- 3 welcome letter from our CEO
- 4 children's services
- 6 youth services
- 8 mental health services
- 10 community programs
- 12 financial summary
- 14 philanthropic support



Mission

Since 1898, Gads Hill Center (GHC) creates opportunities for children and their families to build a better life through education, access to resources and community engagement.



Maricela García

Chief Executive Officer

Welcome Letter From Our CEO

Dear Friends,

Smart societies make sure that families have everything they need to thrive. This includes spaces where children can learn and play and eat healthy food while their parents are at work. Making these opportunities available to everyone in our community ensures families are resilient and adaptable during times of stress.

However, continuing cuts to social services and the lack of a state budget for a year are limiting our ability to make sure that all children and their families can reach their full potential and contribute to our communities.

Gads Hill Center has been able to do good work during these challenging times because of the generosity of our donors and volunteers. Each of you has stepped up to ensure that we continue to provide vital services to 4,000 children and their families.

This year, Gads Hill Center celebrates the 118th anniversary of partnering with families to build the social and economic well-being of our communities. The success stories in this report represent positive outcomes for the families and neighborhoods of the southwest side of Chicago

and beyond. They are the stories of our neighbors who rise together to share their gifts and talents and contribute in a meaningful way.

All parents have big aspirations for their children, and need support at different points in their lives. It is the partnership that we build with parents that produces the positive and long-lasting results that we account for every year. To witness the effort that working families make to create a better future for their children is my greatest motivation as CEO.

Thank you for caring, for believing in our mission, for partnering with us to create opportunities for children and their families to live their best lives through good education, access to social resources, and community engagement. This annual report serves as a measure of accountability to your investment in Gads Hill Center's programs and the families we support.

In gratitude,

A handwritten signature in black ink that reads "Maricela García".

Our Children's Programs

Social Impact

93%

of parents report having more knowledge to improve their parenting skills

86%

of children in the program meet or exceed the major areas of child development and learning



Home Visiting Program

Serves around 300 children, ages 0-5, and expectant parents. This program offers support, guidance, and child development services directly to 260 families in their homes. Home Visitors provide prenatal, postnatal, and child development support. They teach and coach parents to create safe learning environments that stimulate positive parenting behaviors and language development.



Center-Based Early Childhood Education

Serves 160 children, ages 2-5, and their families in North and South Lawndale, and Chicago Lawn. The Child Development Centers provide children with comprehensive experiences centered on several critical elements: an environment that promotes physical, cognitive, social and emotional growth through play; preparing each child for school success and; early learning opportunities through a developmental, age-appropriate research-based curriculum.



The Partner Network

Provides services to 250 children and families through a partnership with eight privately owned early childhood providers. The network functions in neighborhoods with limited access to quality early education programs including: Chicago Lawn; West Englewood; Auburn Gresham; Austin and; Ashburn. Gads Hill Center monitors and guides each privately-owned center to ensure they adhere to the same quality of service that GHC provides in the centers that we directly operate.

Family Support Services

Provide comprehensive case management services to approximately 600 children and families enrolled in Gads Hill Center's early childhood programs. Our staff connects families to resources they need to continually meet their family, career and health-related objectives. As a result, families are ready to support their children as they progress onto their next developmental and social-emotional stages.

Angelica's Story: The Confidence to Grow

Through our collaborative Children's Programs, Gads Hill Center advocates for the child while linking parents to needed resources in the greater community. Angelica utilized the Home Visiting Program to enhance the social and emotional well-being of her family.

Angelica came to Gads Hill Center (GHC) seeking help to guide her two-years-old daughter, Julie, through the critical first years of life. Knowing that education begins in the home, she wanted to strengthen her parenting skills, enhance her family's well-being, and establish a support system from the comfort of her own home. At each home visit, Angelica's parenting skills blossomed and she learned how to stimulate Julie's learning. Together, they were learning, growing, and interacting successfully with others through the guidance of GHC staff.

In time, as Angelica's relationship with her Family Support Worker grew, she began to discuss other parenting challenges. Angelica confided that she was concerned for her teenage daughter Jennifer, who was experiencing behavioral issues and failing in school. Yet, Angelica felt helpless in her ability to emotionally support Jennifer as her own mental health was declining from the family conflicts that Jennifer's behavior had created. Not knowing where

to turn for help, Angelica became overwhelmed. She isolated herself and began to experience suicidal ideation.

After the courage to reach out, the Family Support Worker and Angelica created short and long-term goals to help Angelica and her family. Angelica was referred to GHC's Mental Health staff for additional social-emotional support during home visits. The Family Support Worker also helped her to secure mental health services for Jennifer, who was diagnosed with Attention Deficit Hyperactivity Disorder (ADHD). Because of these interventions, Angelica's mental health began to recover. Jennifer began to improve her behavior and school performance through the GHC support she received.

GHC staff continued to work closely with Angelica to help her family obtain the resources they needed to succeed. Angelica remained in the Home Visiting Program and continued to improve her capacity as a parent.



700+

families report an improvement in their health and well-being

With increased confidence, Angelica now feels self-assured in her relationships with her family. She feels more comfortable as her children's first teacher and best advocate.

Gads Hill Center's holistic approach to provide services to the whole family creates a lasting, sustainable transformation so that families like Angelica's can thrive to achieve their full potential.

Our Youth Programs

Social Impact

93%

of youth in Teen Connection grow in their competency as a STEM learner

93%

of youth in Club Learn are successfully promoted to the next grade level

84%

of youth meet Chicago Public School attendance requirements, combating chronic truancy rates

Our Youth Services Programs

- *Provide academic enrichment in Science, Technology, Engineering, and Math (STEM)*
- *Foster leadership, conflict resolution and social-emotional skills*
- *Equip parents with the necessary tools to support the academic goals of their children*



Club Learn

Is a quality after-school enrichment program for children ages 5-12 in the Pilsen, North and South Lawndale neighborhoods of Chicago. The program provides a multifaceted curriculum centered around the sciences. Club Learn also offers an enrichment environment to foster a love of learning while helping children develop socially, emotionally, and physically. Club Learn is offered during the summer with full day programming.



Teen Connection

Is designed for youth ages 13-18 who are striving toward post-secondary aspirations. Many of our teens will be the first in their families to attend college. As such, they require additional support to achieve their scholarly and career goals. The program provides enrichment and academic resources, such as opportunities to engage in STEM projects like robotics engineering through participation in the FIRST Tech Challenge. Teen Connection also offers individual tutoring and mentoring that help teens graduate high school and enter college prepared to succeed.

Diana's Story: Education is Key

Gads Hill Center Youth Programs foster a love of learning from first grade through high school graduation. Teen Connection helped Diana present her environmental vision on the national stage.

Diana began attending Gads Hill Center (GHC) when she was six-years-old. Now, at 16, she credits GHC's Teen Connection program for giving her educational opportunities.

Teen Connection focuses mainly on STEM (Science, Technology, Engineering, and Mathematics). The youth in the program develop projects using STEM to improve the quality of life in their communities. Diana designed a Greenspace Project, which outlined a plan to beautify outdoor spaces in Pilsen, a Chicago neighborhood lacking in usable green space.

Through GHC, Diana entered a national competition for innovative STEM proposals and was selected to present her project at the National Council of La Raza (NCLR) annual

conference, in Orlando.

In addition, Diana helps bridge the technological divide in Pilsen by teaching computer literacy classes to adults. Along with 11 other technology trainers, Diana coaches community members in essential computing skills. The project, she says, "taught me teaching techniques and responsibility." Through this initiative, Diana also reports growth in her social-emotional skillset, such as patience and cooperation.

Diana plans to study medicine at college, or use her initiative and creativity to pursue business studies. Whichever path Diana chooses, she's sure to have a bright future. A future facilitated through educational programming at GHC.



100%

of youth in Teen Connection graduate high school with a college acceptance letter

Our Mental Health Programs

Social Impact

85%

of youth stayed above the Chronic Truancy level determined by CPS

75%

of parents who attended psychoeducational workshops showed increased confidence and ability to work with their children

72%

of youth showed a positive increase in behavioral stability and impulse control: behavioral incidents dropped from two per day to two per week



Student Services

- Assessment and Individualized Treatment Planning
- Individual and Group Therapy
- Restorative Interventions
- Crisis Management



Staff Services

- Care Team Coordination
- Individual Consultation
- Clinical Observations in the Classroom
- Psychoeducational Workshops
- Development of Action Plans



Parent & Family Services

- Family Therapy
- Home Visits
- Support Groups
- Case Management

Healthy Minds, Healthy Schools

Is a comprehensive mental health program developed for inner-city elementary and high school settings. It is founded on the belief that empowering individuals through relationships will enable them to transform their lives. Through this program, Master's-level clinical therapists facilitate a comprehensive array of interventions at seven CPS schools. Clinicians utilize evidence-based, culturally and linguistically-relevant interventions with a person-centered approach. These methods have positive outcomes on student performance, staff members' capacity to support diverse learners, and the overall school culture.

Simone's Story: The Path to Empowerment

Gads Hill Center Mental Health Services are integrated across agency-wide programs. GHC offers a holistic approach by working across generations and systems that influence students and have a positive impact on their overall success as Simone's story illustrates.

Simone is a student at Gage Park High School. She was referred to a Gads Hill Center (GHC) school-based Mental Health Clinician after staff noticed a trend of behavioral infractions and low academic achievement. It was Simone's first experience with therapy. After some initial resistance, she began to engage positively in the therapeutic process.

Simone had struggled with untreated trauma following exposure to community violence. This unaddressed mental health issue manifested through frequent behavioral infractions, including truancy and classroom disruptions.

Due to the intensity of her case, the clinician invited Simone to attend the Young Women Empowerment Group to supplement her weekly individual therapy sessions. Through her involvement with the group, Simone gained a network of peer support. She learned how to communicate her pain and how to listen to her peers.

The group helped Simone develop trust and communication skills, and she began to open up in her one-on-one therapy sessions. By the end of the year, Simone experienced fewer behavioral incidents and her in-class attendance had increased. Academically, her grades improved from a D/F average to straight B's across all of her classes.

When Simone returned to school the next year, she requested continued therapy from GHC's clinician—a noticeable change from her initial resistance the previous year. Today, Simone continues to be involved with the Young Women Empowerment Group, and is a leader for new students who join the group.

Prior to therapy with a GHC school-based clinician, Simone had no access to such resources. With the help of her therapist, Simone is now on a path toward recovery and achieving her full potential.



"Gads Hill Center staff go above and beyond to provide consistent services for students, and help staff build proactive interventions that support everyone."

— **Allison Tingwall**
Principal, Curie Metropolitan High School

Our Community Programs

Social Impact

100%

of participating Hope Institute Learning Academy (HILA) students moved on to the next grade level

72%

of participants in Healthy Moves workshops demonstrated increased nutrition and fitness knowledge

75

parents participated in parent programming offered through the community school partnership at Hope Institute Learning Academy (HILA)

GHC Community Impact

- 4 GHC Locations
- 400 Families Served
- 7 Partner Sites
- 650 Volunteers engaged
- 7 Elementary and High Schools
- 400+ Donors



Healthy Moves

Gads Hill Center (GHC) trains adults as health promoters across its service areas. Our health promoters educate community members about healthy eating, grocery shopping, and physical activity through outreach in schools, churches, clinics, and other community locations. They also connect families to health care options such as the Affordable Care Act. Healthy Moves builds health and well-being across generations in the community.

PlayStreets

With the Chicago Department of Public Health, Gads Hill Center held 75 PlayStreets events in communities across Chicago, reaching around 16,000 individuals. These events temporarily transform public streets into safe places for children and adults to engage in active play. PlayStreets support our strategy of engaging the communities we serve with physical activity and healthy choices.



Partnering with HILA

Gads Hill Center (GHC) partners with the Hope Institute Learning Academy (HILA) to implement the Illinois State Board of Education 21st Century Community Learning Center grant. This includes STEAM (Science, Technology, Engineering, Art, and Math) and Lit Art enrichment programs with opportunities to build social-emotional resilience. The joint program provides parents with workshops emphasizing wellbeing, leadership training, and their role as partners in education. Together, we support the positive academic and social-emotional development of 214 students and provide over 100 parents with engagement opportunities. After one year HILA's School Quality Rating Policy was upgraded from a Level 3 ("needs intensive intervention") to a Level 2+ ("in good standing").



Commitment to Quality Improvement

Gads Hill Center (GHC) is committed to quality standards that have a positive social impact. To this end, we have systems in place to rigorously evaluate the impact of our programs based on our logic model. The impact of our programs is measured by the progress we make in achieving three main goals: academic success; social-emotional competencies and; parent engagement.

Data analysis from program evaluation allows us to identify best practices and areas for improvement. Our quality improvement goal is to identify best practices to work effectively with the clients we serve. GHC's evidence-based best practices and premium programs lead our participants to be successful in school and in life.

GHC has a long history of implementing high-quality programs and collecting

evaluation data that demonstrate strong social impact.

As such, we are proud to participate in the Chicago Benchmarking Collaborative (CBC). The CBC is a seven-organization community that uses a shared database to monitor outcomes for its early childhood, youth, and adult learning programs and partner in performance improvement initiatives.



1000+

individuals and families were referred to and signed up for needed benefits, including Affordable Care Act, Supplemental Nutrition Assistance Program, and Primary Care Physicians

Financials

Thank you to the donors and partners whose support of Gads Hill Center helps provide services to children, youth, and families in our community. We are proud to be responsible and effective stewards of your philanthropic efforts.

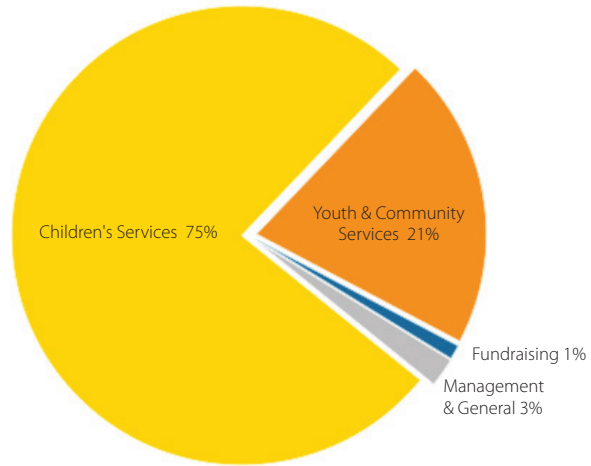
Audited Financials for July 1, 2015 – June 30, 2016

Revenues	2016	2015
Private Contributions	\$934,058	\$799,769
In-Kind Contributions	\$53,542	\$62,279
United Way of Metropolitan Chicago	\$45,000	\$167,500
Fees & Grants from Governmental Agencies	\$5,736,402	\$5,479,960
Program Service Fees	\$79,797	\$82,478
Interest and Dividends	\$39,408	\$35,454
Gain (loss) on Investments	\$22,793	\$14,537
Miscellaneous Income	\$11,595	\$73,375
Total Revenues and Other Support	\$6,877,009	\$6,715,352

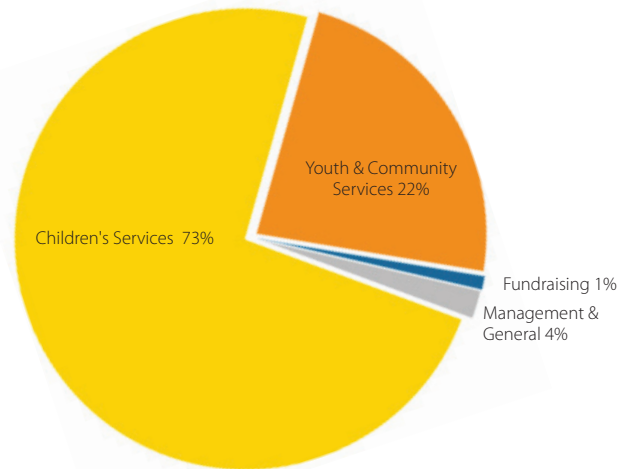


Thank you to the volunteers who supplement services provided by our staff and funders, and who help us achieve our vision that all individuals, regardless of where they start, will achieve their full potential

2016



2015



Expenses

Expenses	2016	2015
Children's Services	\$5,031,022	\$4,583,154
Youth & Community Services	\$1,404,573	\$1,422,830
Management & General	\$241,386	\$237,332
Fundraising	\$52,114	\$67,917
Total Expenses	\$6,729,095	\$6,311,233

Total Expenses

Change in Net Assets	\$147,914	\$404,119
Net Assets at Beginning of Year	\$3,763,172	\$3,359,053
Net Assets at End of Year	\$3,911,086	\$3,763,172

Many Thanks to Our Donors

\$ \$50,000 and Above

The Chicago Community Trust
Get IN Chicago
National Council of La Raza
Paul M. Angell Family Foundation

\$ \$25,000 - \$49,999

Colonel Stanley R. McNeil Foundation
Michael Reese Health Trust
Polk Bros. Foundation
Steans Family Foundation
William J. Watson Trust

\$ \$10,000 - \$24,999

The Blowitz-Ridgeway Foundation
Chicago White Sox Charities
The Comcast Foundation
The Field Foundation of Illinois, Inc.
GDP Charitable Trust
Grant Healthcare Foundation
The Maurice R. & Meta G. Gross Foundation
Local Initiatives Support Corporation
Prince Charitable Trusts
Tyson Foods

\$ \$5,000 - \$9,999

Adams Street Partners, LLC
Anonymous
David & Mary Madelaine Brett
James & Carolyn Brett
Bright Promises Foundation
Bernard Buchholz
Chapman and Cutler LLP
David Crossett
Exelon
Fifth Third Bank
Humana Inc.
MB Financial Charitable Foundation
Michael Best & Friedrich LLP
Nicor Gas Corporate Contributions
Northern Trust Company Charitable Trust

David & Suzanne Shier
Reed Smith, LLP
The TJX Foundation, Inc.
Tom Russell Charitable Foundation,
Inc.
Beverly Wyckoff

\$ \$2,000 - \$4,999

AT&T
The Boeing Company
Christopher Brett*
Matthew & Michele Brett*
Pedro Cevallos-Candau
George Crossett
Dover Foundation
Dorinda Flores
George M. Eisenberg Foundation for
Charities
Mark Hersh
Jeffery Janisch
Kinder Morgan Foundation
Juan Gabriel Moreno
James & Suzanne Neaylon
Peoples Gas Light and Coke Co.
PNC Bank
PricewaterhouseCoopers LLC
Republic Bank
Source Consulting Group
Telemundo Chicago
The Trustmark Foundation
US Insurance Agency
Wintrust

\$ \$1,000 - \$1,999

Donnica Austin-Cathey
Daniel & Spencer Baker
BMO Harris Bank
James & Patricia Brett
John & Lori Brett
Jim Markich & Kristie Clemons
Lawrence Crossett

Curie Metropolitan High School
William & Valerie DePriest
Formally Modern Tuxedo
Glencoe Union Church
Chris & Kathy Gubanich
Delia Gutierrez McLaughlin
Nancy Isaac
David Hartsell & Wendie Reece
Susan Kroll & James Sponder
Jorge Leon
Candelario & Elizabeth Lumpkin
Celio
Philip Stern & Leslie Markman
Alejandro Menchaca
Midwest Energy
Mount Sinai Hospital Medical
Center
MyHabenero.com
Frank Patzke
Primera Engineers, Ltd.
Saint Anthony Hospital
Theodore Thomas
Toroso Investments
Marjorie Watkins
Winnetka Congregational Church
Woods Fund of Chicago
Daniel & Betty Wyckoff

\$ \$500 - \$999

BP Canada Energy Marketing Corp.
Jorge V. Cazares
Debra Clayton
Corisco Construction Corp.
Joseph Dimberio
Dynamic Electric
Thomas P. FitzGibbon
Cornelius D. Griggs
Edward Haberkorn
Hispanic Business Network
Chicago
Eleanor Janus*
Jewish Federation of Metropolitan
Chicago

Lakeshore Learning Materials
Minerva L. Linares
Richie Marrero
Thomas Miller*
Rosanne Moeslein*
NBC Universal Media, LLC
Kathy Osberger
Ben Parma
Karen Philip
Pugh, Jones & Johnson, P.C.
Jeremy Selsky
Helen Sutter
University of Illinois at Chicago
James & Katherine Zartman

\$ \$250 - \$499

Michael Ammerman
Joseph Anselmo
Lisa Ann Cameron
Rachel Cook
Coyle Kiley Insurance Agency,
Inc.
David DeJong
Robert Delaney
Marco De La Rosa
Louis Ebling
Ruben & Joli Fridman
Steve Gerschoffer
Nancy Gerstad
Great Lakes Credit Union
Dan Greiwe
Matthew King
H. Kramer & Co.
Stephen Heller
Suzanna Higgins
Illinois Action for Children
Jean & Charles Kelly
Brigitte Lenz
Mark & Miriam Leskovar
Burkland
Brian Marozas
Virginia Martinez
Patricia Mendoza
Tom Mikucki
Mark & Jean Mondarala

Marin Montes
Andrew Morua
Judith Mulvey-Gale
Nectel Technologies, Inc.
PACO Communications
Vincent & Karen Parrinello
Larry & Maria Pavlou
Guadalupe Preston
Brogan & Ann Ptacin
Annette Rivera & Patrick
Enright
Raul Raymundo
Angela Searcy
Jessica & Nick Simmons
Robert Young

\$ \$100 - \$249

Carlos Alcerro
Jennifer Anglin
Antolin & Associates Consulting
Emma Asante
Atelier Building Group
Jose Luis Avalos
Baird Foundation, Inc.
Hal & Paula Baron
Frances Becker
Diana Black
Allison Brett
Kate Brett
Martin & Dolly Brett
BP Foundation Matching Gifts
Program
Edward Cedano
William & Sheila Clarkin*
Ramon Correa
Jeanne Cusack Walsh
Christine Decyk
Ernesto & Maria De La Torre
Luis De La Torre
Janice Dilworth & Gregory
Denton
Olive Dilworth
Patricia Disselhorst
Javier Dominguez
Dot Press

Donald P. Dressel
 Dorene Dressel
 Mark & Kitty Egan
 David & Lisa Ellstrom*
 Alex Esparza
 Ricardo Estrada
 Lyn Corbett & Mark Fitzgerald
 Freddy Flores
 Forest Preserve District of Cook
 County, Illinois
 Carol Fowler*
 Thomas & Patricia Fronczek
 Agnes Gaber
 Maricela Garcia
 Mario Garcia
 Antonio Guillen
 Elizabeth Gustafson
 Miriam Gutierrez
 Caroline Harney
 Jason Henninger
 Flavia Hernandez
 Ailisa Herrera
 Horacio J. Isais
 Keith Iverson
 Edward & Virginia Johnson*
 Charles & Patricia Klaus
 Mark Davis & Marysue Kranstrover
 Salvador Lamas
 Jack Lane
 Lynmarie Lane
 Leal Associates
 John & Jill Levi
 Lorena Levy-Alonso
 Rogelio Lopez
 Joseph A. & Amy Madden
 Nicholas Manusos
 Stephanie Martinez
 Debra Marton
 Frank & Linda McCarthy
 Ricardo Meza
 Alison Millerick
 Mujeres Latinas En Acción
 Christine Myers
 Himani Nadgauda
 Nania Energy
 Christopher Newman
 Michael & Diane Obrien
 Eliza Ochoa

Claudia Oronia
 Juan Orta
 Maria Ovalle
 David Pesqueira
 Elizabeth Pena
 Henry & Tanya Pietrkowski
 John Pintozi
 Carlos Ramirez
 Leonard Ramirez
 Iniquez Raniel
 Pabel Reinoso
 Fred Rosen
 Michal Rotman
 David Schenk
 Sandra Seim
 Ray & Meeta Sinnappan
 Sue Suchy*
 Donovan Sukantika
 Karen N. Thomas
 Allison Tingwall
 Joseph & Lisa Torres
 Urban Oasis
 Tom & Debbie Wachs
 Cynthia Weston
 Ralph Wilson
 Michael Winters
 Barbara J. Wood-Prince
 Josh Yomtoob
 Judith Zaba
 Edward Zamora

\$ \$1 - \$99

Leah Adams
 Megan G. Aebi
 Dan Allard
 Durrell Anderson
 Joseph & Marilyn Antonik
 Stephanie Arevalo
 Charles G. Argianas
 Rosa Barbosa
 William & Ann De Bortoli
 Katherine Boyd
 Patrick Breslin & Eileen O'Malley
 Breslin*
 Anne M. Brett*
 William R. & Helen J. Brett*

Betty Bretz
 Roger Caplis
 Maria Cardenas
 Barbara Castelllos
 Lucia Chavez
 Reggie Clayton
 Allen Cohen
 Sarah Collart
 Mary Daly*
 Peter Devlin
 Amparo A. Diaz De Leon
 Steven & Teresa DiPietro*
 Bertha G. Magana & Giuseppe
 Mario Di Prizio
 Barbara Domarad
 Amy Dosen*
 Joanne Durkin
 David P. & Carol A. Efrogmson*
 Stacy Eichorst
 Francisco Fernandez
 Leo Guerrero
 Rachel Hector*
 Natalie Herrera
 Joan Hersh
 Steven Herwick & Nirmala
 Gonsalves
 Merle & Peter Holland
 Amelia Johnson
 Charles Jordan
 Joanne Keenan
 Kirby Kemp
 Lori Kennedy*
 Raymond F. Koporc
 Carol Larson
 Karla Leal-Lopez
 Jason Lunderman
 John Mann
 Charlotte A. McHugh
 Joseph & Agnes McHugh
 Melissa Mercado
 Gomez Miguel
 Jennie Moreau
 Jill Mudge
 Shelley & Neil Mulconrey*

Frieda Murray
 Robert Novak*
 Amy & David Olshansky
 Kit Pagoria*
 Katina Panagopoulos
 Jose Perales
 Philip Ptacin*
 Daniel & Elizabeth Pufunt*
 Michael & Linda Pula*
 Alfred Rivas
 Jeffrey J. Rollette
 Janet Rudd*
 Richard Rutschman
 Carlos Saucedo
 Renee Schodosky
 Susan E. Shabica
 Jim Silver
 Javier Solis
 Bryan Stokes
 Matthew & Cristina Strout
 Heidi Summers*
 Sandy Summers*
 Marianne Supan*
 Paul & Anne Szymczak*
 Stephen & Rebecca Wallenfelsz
 James Wasta
 Mary Weis*
 Karla Zavaleta

+ In Honor

George H. Crossett donated in honor of Dave Crossett

+ In-Kind

ABT
 Beverage Tasting Institute
 Billy Casper Golf
 Bottleneck Management
 Pam Brockman
 Button & Zipper
 Maria Castro

Chicago Children's Theatre
 Chicago White Sox
 The ComedySportz Theatre
 Court Appointed Social Advocates of
 Cook County
 Clair Daney
 Dearborn Street Realty, LLC
 The Field Museum
 Dirk's Fish & Gourmet Shop
 Karina Gomez
 Grant Thornton
 Hotel Palomar
 Kohl Children's Museum of Greater
 Chicago
 Koval Distillery
 Landmark Theatres
 Lettuce Entertain You Enterprises,
 Inc.
 Littler Mendelson
 Lou Malnati's
 Lyric Opera of Chicago
 MB Financial Bank
 NBC5 Chicago
 Penske Truck Leasing
 Preciosa Jewelry
 PRP Wine International Inc.
 Paul Rehder Salon
 Revolution Brewing
 Salon Buzz
 Scarborough & Associates
 Smile Fixation
 Sprinkles Cupcakes
 Starcom
 Village Greens of Woodridge
 The Writer's Theatre

+ In Memorium

Janice Dilworth & Gregory Denton and Olive Dilworth donated in memory of Brockie Dilworth

* Donated in memory of Susan Brett

BOARD OF DIRECTORS:

Beverly Wyckoff, President
Dover Corporation

Juan F. Orta, Vice President
Telemundo Chicago

Mark S. Hersh, Treasurer
Reed Smith

Donnica Austin-Cathey, Secretary
Sinai Health System

James A. Brett, Jr.
Natural Gas Pipeline Co. of America

Delia Gutierrez McLaughlin
Coda Technology Consulting

James P. Brett, Sr.
BorgWarner Automotive

Jorge Leon
Michael Best & Friedrich, LLP

Jorge V. Cazares
Pugh Jones & Johnson PC.

Rogelio Lopez
PNC Bank

Pedro Cevallos-Candau
Primera

Stephanie Martinez
Rush University Medical Center

Debra Clayton
Northern Trust

Virginia Martínez, J.D.
Civic Leader

David S. Crossett
Chapman and Cutler

Tanisha Sellers
Parent Policy Council Chair

Dorinda Flores
Fifth Third Bank

David Shier
Walsh Construction

CIVIC PARTNERS:

Brighton Park Community Coalition

Chapin Hall, University of Chicago

Chicago Benchmarking Collaborative

Chicago Commission on Human Relations - Council on Equity

Christopher Elementary School

CLOCC Early Childhood Interest Group

Coalition of State Administered Child Care Centers

Community Renewal Society

Curie Metropolitan High School

Early Childhood Innovation Zone
Cora Teams - North Lawndale & Pilsen/Little Village

Erikson Institute

Gage Park High School

Get In Chicago

Hancock High School

Hedges Elementary School

Home Visiting Applied Research Collaborative

Home Visiting Taskforce

Hope Institute Learning Academy

Illinois Latino Agenda

Illinois Mentoring Partnership

Illinois Partners for Human Service

Illinois Early Learning Council

Latino Policy Forum

Little Village Education Collaborative

National Association of Professional Women

National Council of La Raza

North Lawndale Innovation Zone Committee

National Head Start Association

Pilsen Academy

Pilsen Education Task Force

Pilsen Little Village Innovation Zone Committee

Pilsen Neighbors Community Council

Pilsen Planning Committee

Responsible Budget Coalition

Richards Career Academy

Southwest Organizing Project

Illinois States Attorney's Office

United Way of Metropolitan Chicago

Velma F. Thomas Early Childhood Center

LICENSED BY:

Illinois Department of Children & Family Services—Child Care Center License

ACCREDITATIONS:

National Association for the Education of Young Children

ExceleRate Illinois' Gold Circle of Quality (North Lawndale site)

LOCATIONS:

📍 Pilsen
1919 W. Cullerton St.
Chicago, IL 60608

📞 312.226.2248

📞 312.226.0963

📍 North Lawndale
2653 W. Ogden Ave.
Chicago, IL 60608

📞 773.521.4793

📞 773.521.1196

📍 Brighton Park
4234-6 S. Archer Ave.
Chicago, IL 60632

📞 773.269.6556

📞 773.269.6595

📍 Chicago Lawn
3137 W. 71st St.
Chicago, IL 60629

📞 773.498.8073

📞 773.696.4742